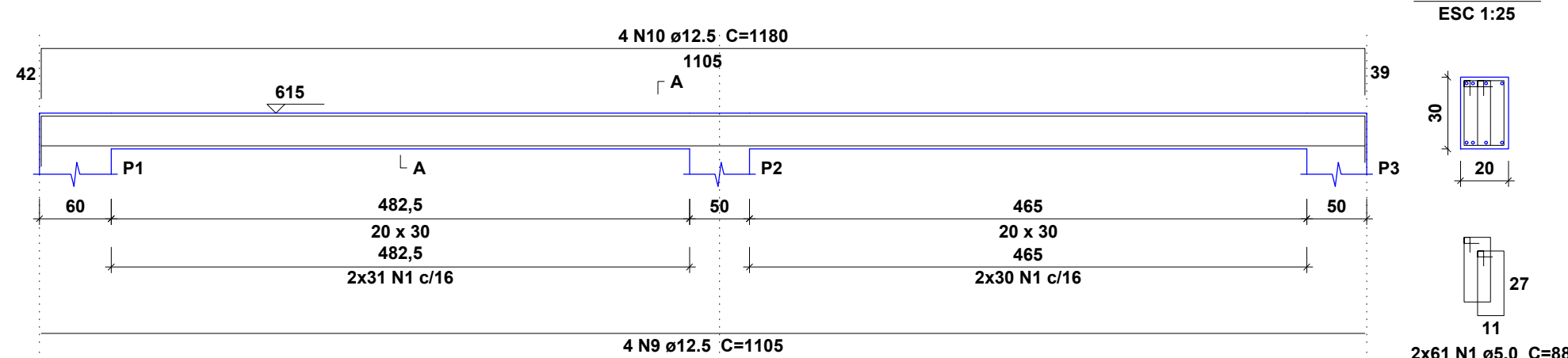
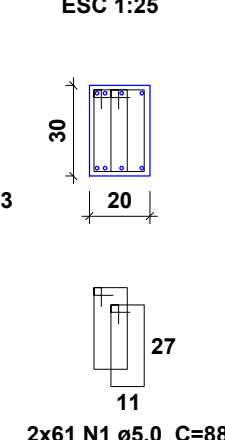


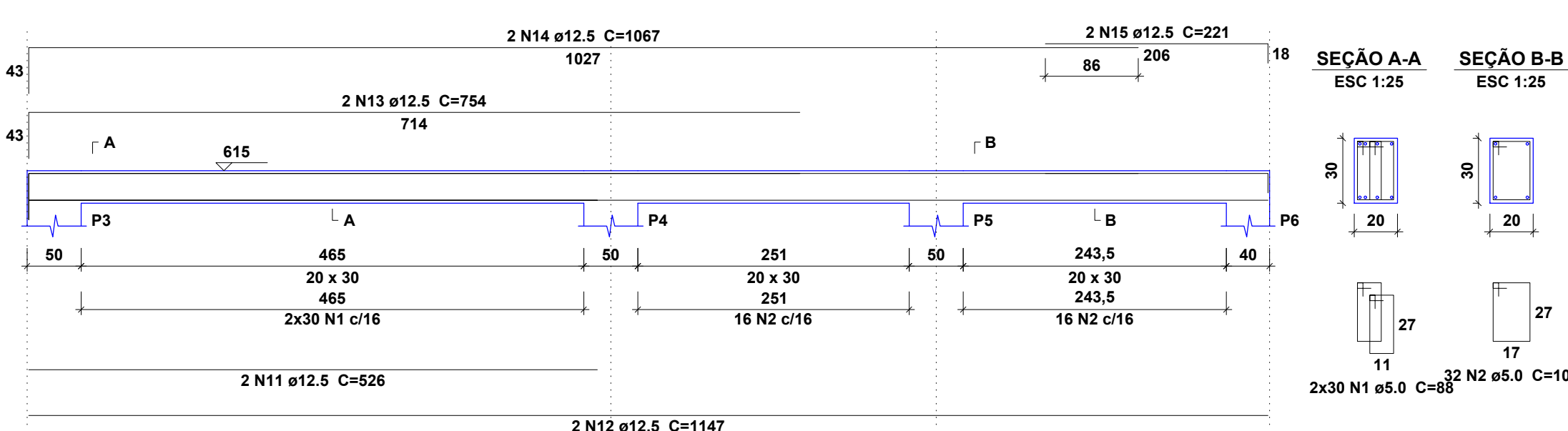
V1
ESC 1:50



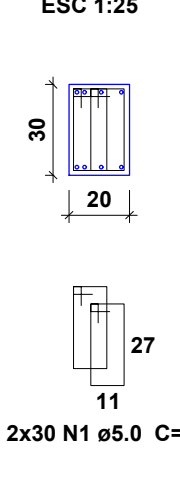
SEÇÃO A-A
ESC 1:25



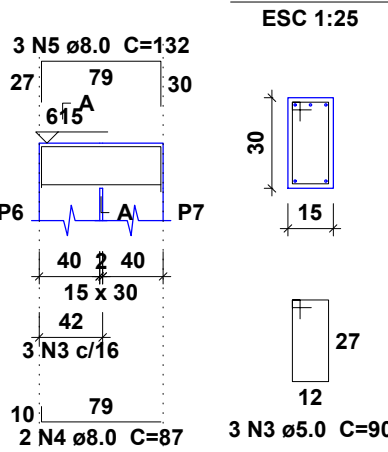
V2
ESC 1:50



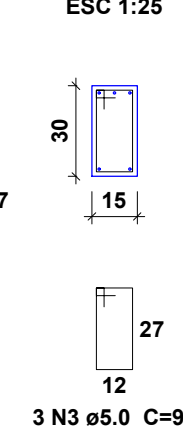
SEÇÃO A-A
ESC 1:25



V3
ESC 1:50



SEÇÃO A-A
ESC 1:25



Relação do aço

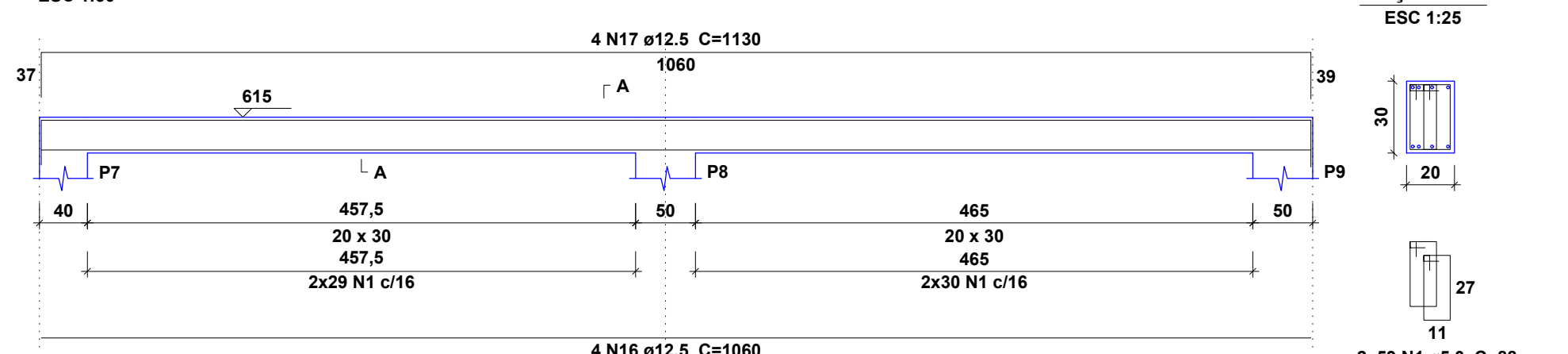
| AÇO | N | DIAM (mm) | QUANT | C.UNIT (cm) | C.TOTAL (cm) |
|------|----|-----------|-------|-------------|--------------|
| CA60 | 1 | 5.0 | 672 | 88 | 59136 |
| | 2 | 5.0 | 182 | 100 | 18200 |
| | 3 | 5.0 | 25 | 90 | 2250 |
| | 4 | 8.0 | 4 | 87 | 348 |
| | 5 | 8.0 | 3 | 132 | 396 |
| | 6 | 8.0 | 5 | 130 | 650 |
| | 7 | 10.0 | 2 | 382 | 764 |
| | 8 | 10.0 | 2 | 411 | 822 |
| | 9 | 12.5 | 4 | 1105 | 4420 |
| | 10 | 12.5 | 4 | 1180 | 4720 |
| | 11 | 12.5 | 2 | 526 | 1052 |
| | 12 | 12.5 | 2 | 1147 | 2294 |
| | 13 | 12.5 | 2 | 764 | 1508 |
| | 14 | 12.5 | 2 | 1067 | 2134 |
| | 15 | 12.5 | 2 | 221 | 442 |
| | 16 | 12.5 | 4 | 1060 | 4240 |
| | 17 | 12.5 | 4 | 1130 | 4520 |
| | 18 | 12.5 | 4 | 1065 | 4260 |
| | 19 | 12.5 | 2 | 470 | 940 |
| | 20 | 12.5 | 4 | 1129 | 4516 |
| | 21 | 12.5 | 4 | 1024 | 4096 |
| | 22 | 12.5 | 4 | 1085 | 4342 |
| | 23 | 12.5 | 4 | 612 | 2448 |
| | 24 | 12.5 | 4 | 590 | 2360 |
| | 25 | 12.5 | 1 | 1144 | 1144 |
| | 26 | 12.5 | 5 | 236 | 1180 |
| | 27 | 12.5 | 4 | 1151 | 4604 |
| | 28 | 12.5 | 2 | 422 | 844 |
| | 29 | 12.5 | 2 | 488 | 976 |
| | 30 | 12.5 | 2 | 852 | 1704 |
| | 31 | 12.5 | 2 | 940 | 1880 |
| | 32 | 12.5 | 2 | 887 | 1774 |
| | 33 | 12.5 | 1 | 683 | 683 |
| | 34 | 12.5 | 2 | 855 | 1710 |
| | 35 | 12.5 | 2 | 382 | 764 |
| | 36 | 12.5 | 2 | 411 | 822 |
| | 37 | 12.5 | 2 | 384 | 768 |
| | 38 | 12.5 | 2 | 437 | 874 |

Resumo do aço

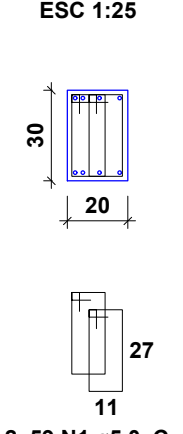
| AÇO | DIAM (mm) | C.TOTAL (m) | PESO + 10 % (kg) |
|-----------------|-----------|-------------|------------------|
| CA50 | 5.0 | 14 | 6.1 |
| | 10.0 | 15.9 | 10.8 |
| | 12.5 | 683.9 | 724.7 |
| CA60 | 5.0 | 805.9 | 136.6 |
| PESO TOTAL (kg) | | | |
| CA50 | 741.5 | | |
| CA60 | 136.6 | | |

Volume de concreto (C-25) = 5.09 m³
Área de forma = 80.83 m²

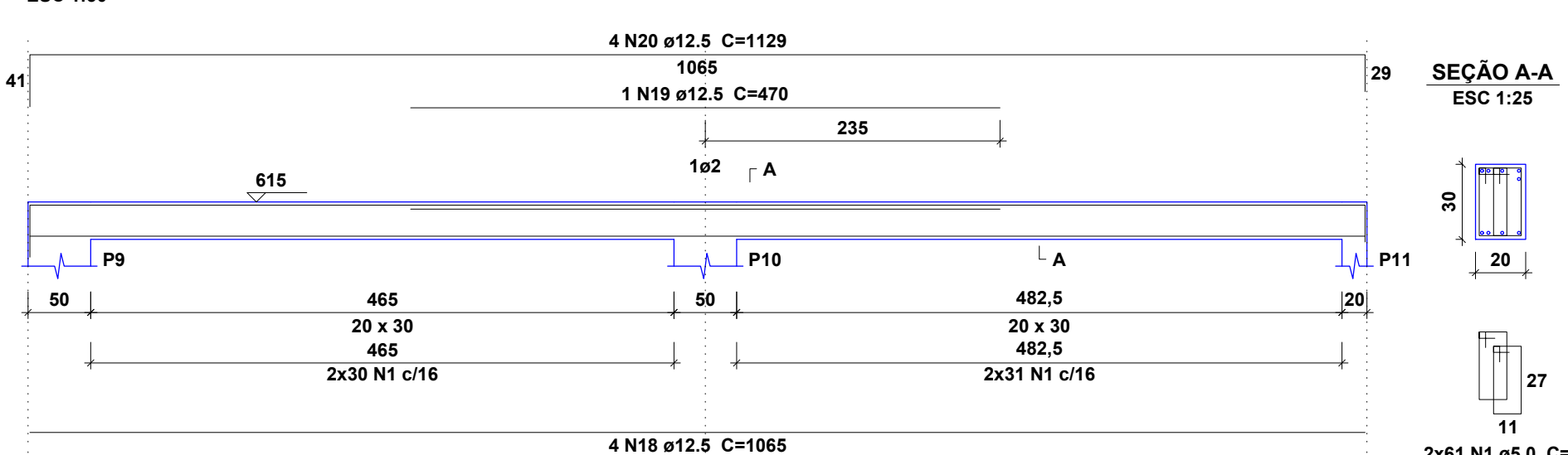
V4
ESC 1:50



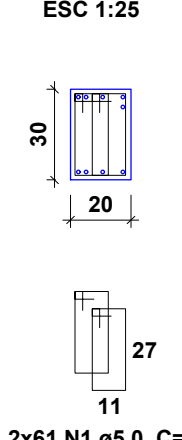
SEÇÃO A-A
ESC 1:25



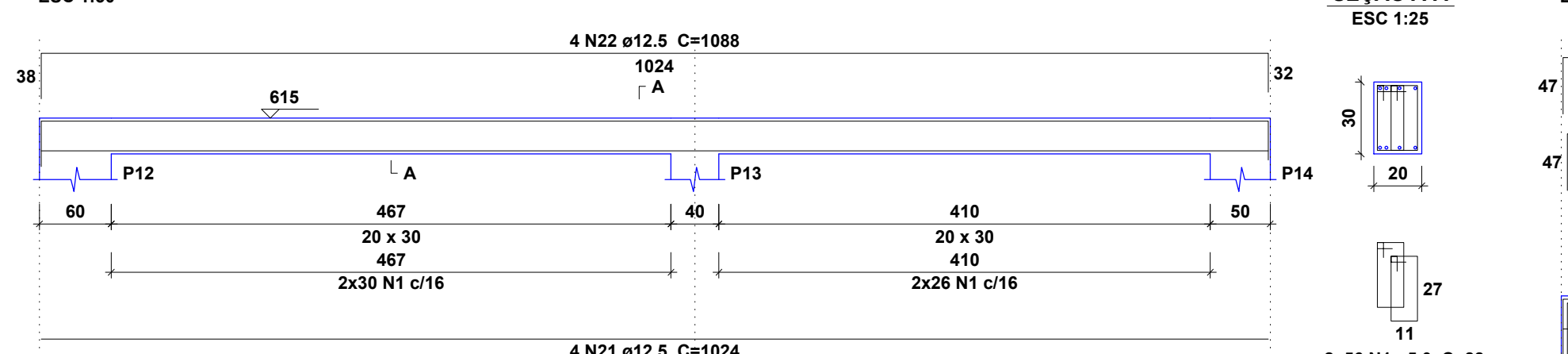
V5
ESC 1:50



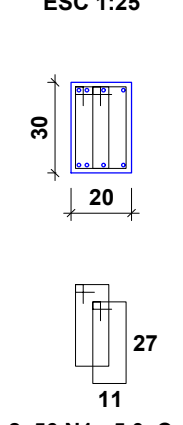
SEÇÃO A-A
ESC 1:25



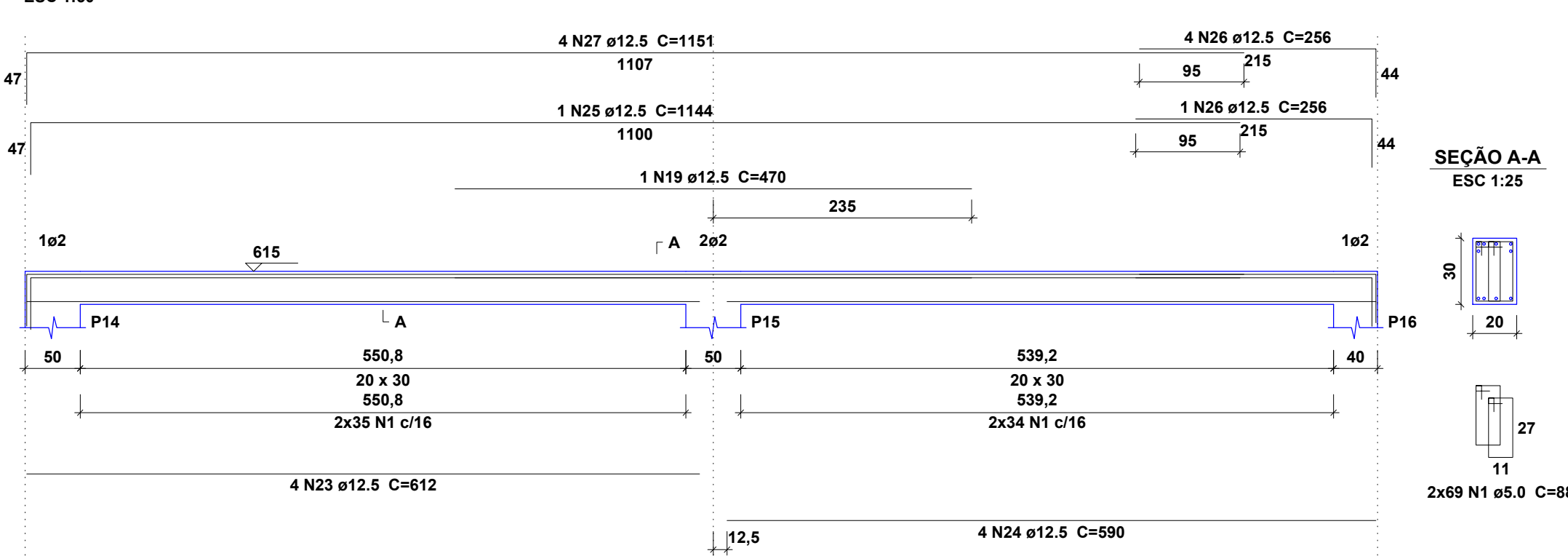
V6
ESC 1:50



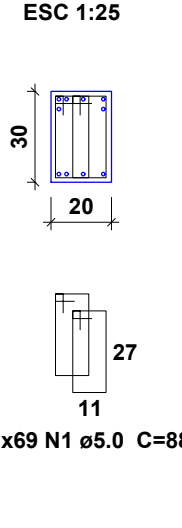
SEÇÃO A-A
ESC 1:25



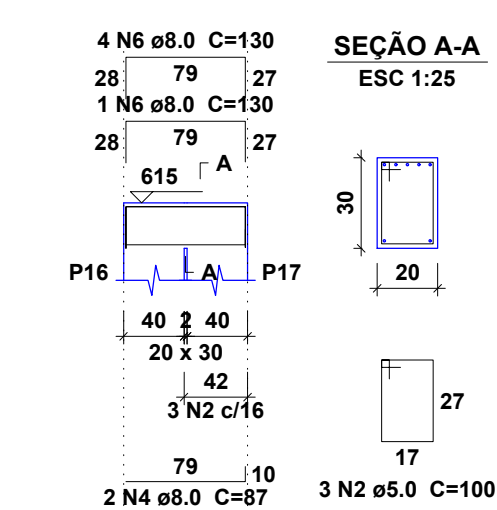
V7
ESC 1:50



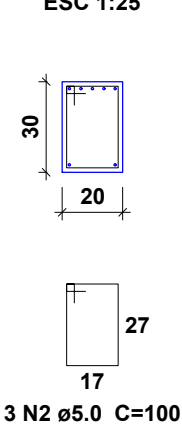
SEÇÃO A-A
ESC 1:25



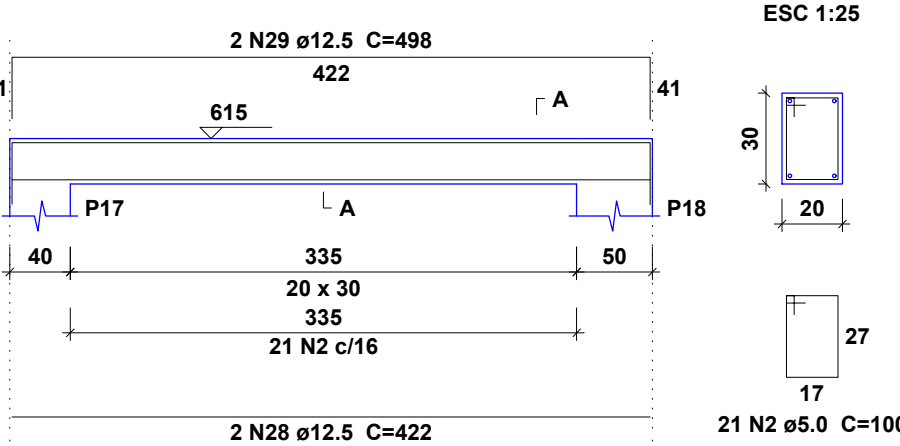
V8
ESC 1:50



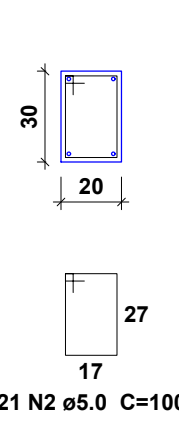
SEÇÃO A-A
ESC 1:25



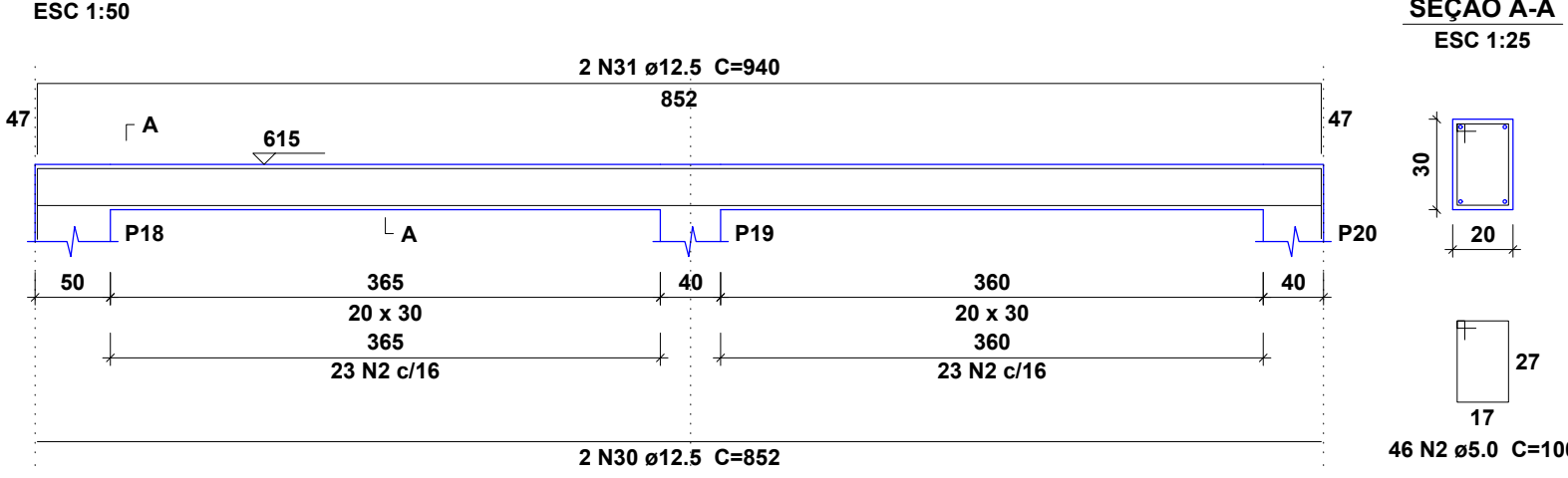
V9
ESC 1:50



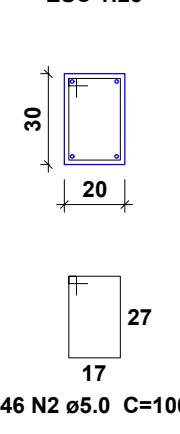
SEÇÃO A-A
ESC 1:25



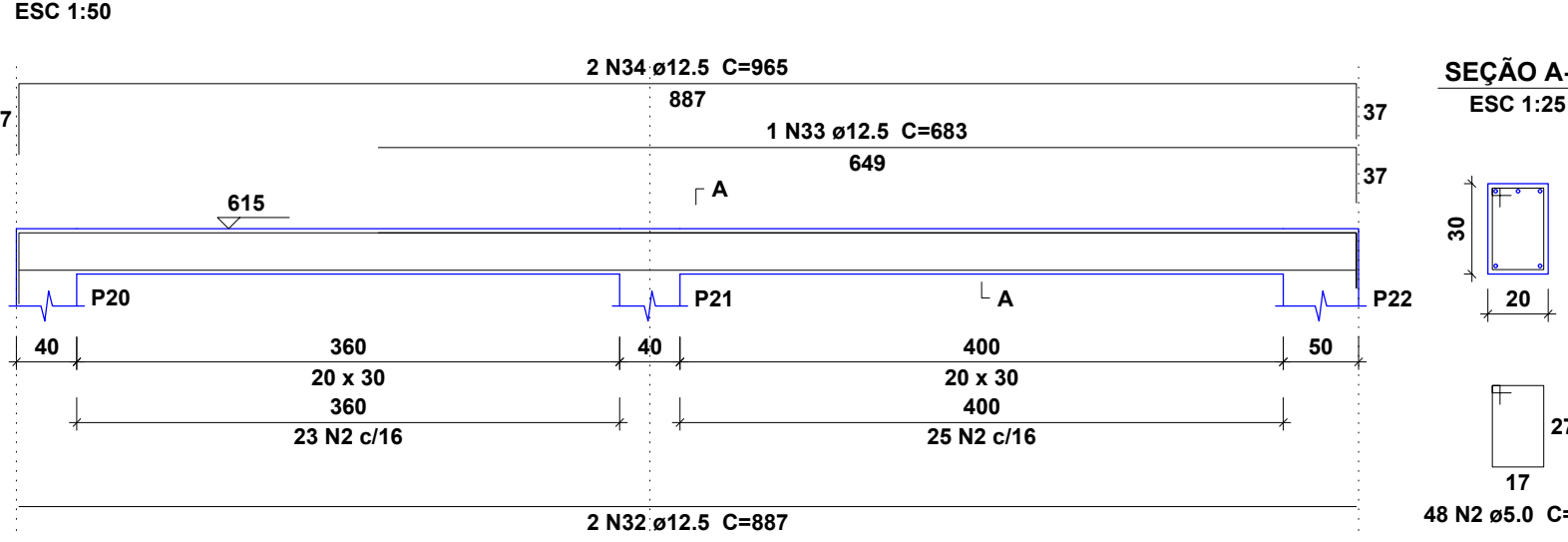
V10
ESC 1:50



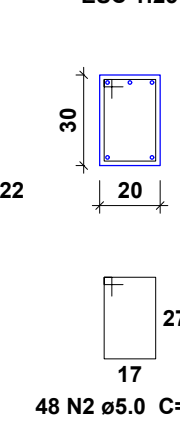
SEÇÃO A-A
ESC 1:25



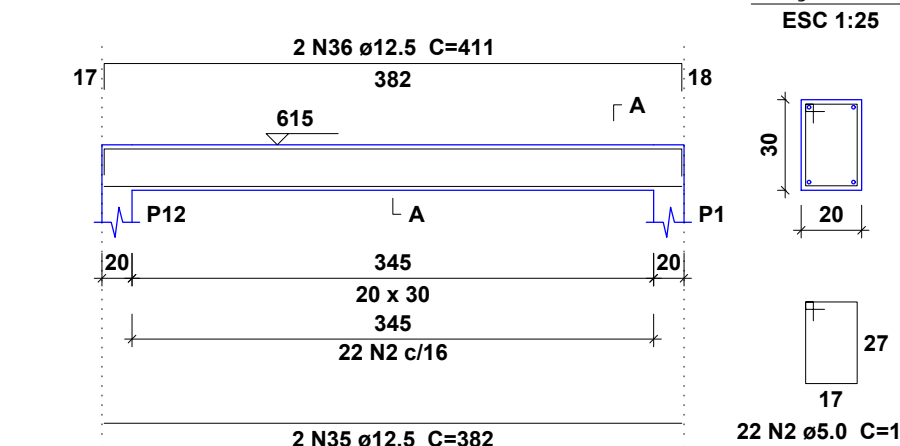
V11
ESC 1:50



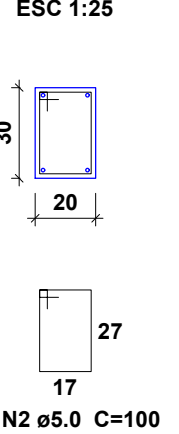
SEÇÃO A-A
ESC 1:25



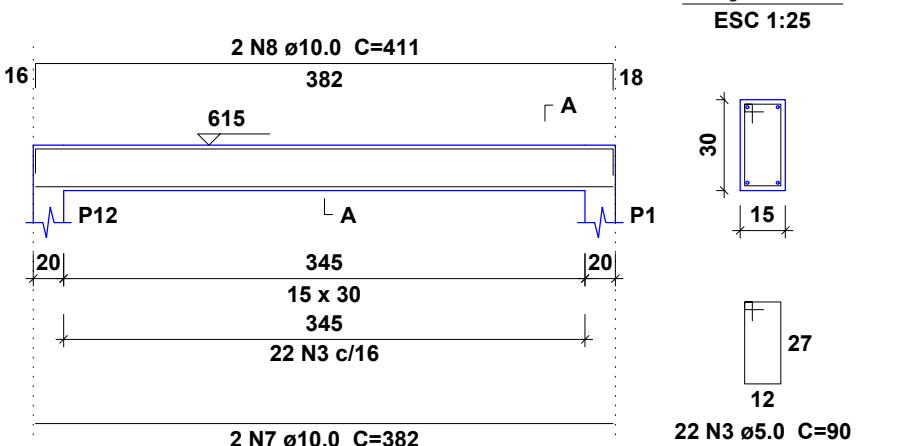
V12
ESC 1:50



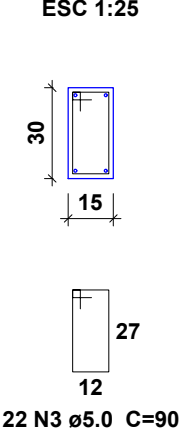
SEÇÃO A-A
ESC 1:25



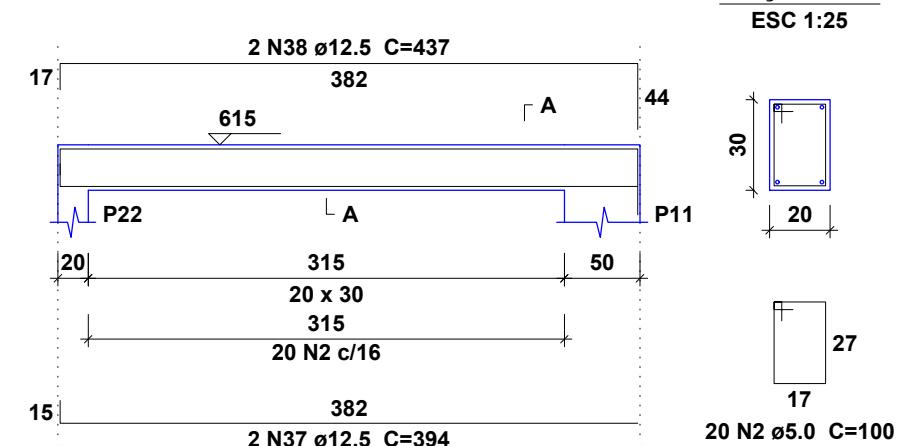
V13
ESC 1:50



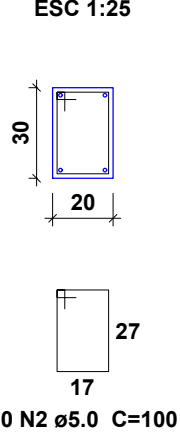
SEÇÃO A-A
ESC 1:25



V14
ESC 1:50



SEÇÃO A-A
ESC 1:25

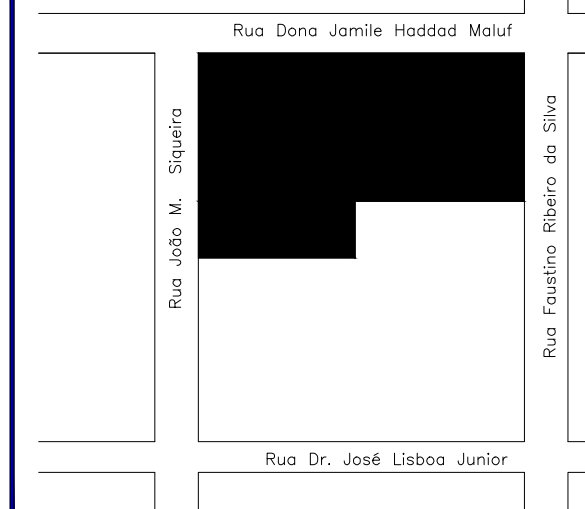


PROJETO EXECUTIVO DETALHAMENTO - VIGAS LAJE 03 (NÍVEL 615)

FOLHA: 14/15

ASSUNTO: PROJETO PARA REFORMA E AMPLIAÇÃO DE ESCOLA
PROPRIETÁRIO: Prefeitura Municipal de Piratininga
LOCAL: EMEF Profª Neusa Franzolin Soares
ENDEREÇO: Rua Margarida Pires, nº 30 - Centro - Piratininga/SP

LOCALIZAÇÃO



DECLARO QUE A APROVAÇÃO DO PROJETO NÃO IMPLICA RECONHECIMENTO POR PARTE DA PREFEITURA DO DIREITO DE PROPRIEDADE E SITUAÇÃO DO TERRENO

PREFEITURA MUNICIPAL DE PIRATININGA
CNPJ Nº 46.137.451/0001-76

QUADRO DE ÁREAS (M²):

| | |
|-----------------|-------------|
| DO TERRENO: | 2.124,11 m² |
| DA CONSTRUÇÃO: | |
| EXISTENTE: | 505,62 m² |
| AMPLIAÇÃO: | 919,24 m² |
| QUADRA COBERTA: | 443,62 m² |
| TOTAL: | 1.867,48 m² |

RESPONSÁVEL TÉCNICO
OTAVIO CABRAL DA SILVA
CREASP: 506966987



PREFEITURA MUNICIPAL DE PIRATININGA
PRAÇA Dr. MÁRIO RIBEIRO DA SILVA Nº 14
FONES: (14) 32659530
CEP 17490-000-CNPJ 46.137.451/0001-76

ART: DES: Engº Otavio Cabral da Silva DATA: MAIO/2022